

30W High Power Density Isolated DC-DC Converter

Compact, isolated DC-DC converter BTJ Series

High efficiency, 1 × 1 inch, 6 sided shield



Applications

- General industrial equipment
- Base station, server
- Semiconductor manufacturing equipment
- Measuring equipment
- Medical equipment etc.

Features

- Isolation voltage DC1500V (1min.)
- Over current protection
- Adjustable output voltage (single output)
- No electrolytic capacitor, no tantalum capacitor
- Low noise, high efficiency
- DIP package
- Wide input voltage range
- RoHS compliance
- Dual power supply can be used as a single power supply
- Operating temp. Ta=-40°C to +85°C (Temp. derating required)
- Heat sink not required

Line up

Detail information →



Models BTJ Series	Input V Vdc	Output V Vdc	Output I A	Ripple Noise mVpp(typ)	Efficiency % (typ)	Line Reg. mV(max)	Load Reg. mV(max)
BTJ24-03S700D	24 (9 to 36)	3.3	0 to 7	15	86	0.4	0.4
BTJ24-05S600D		5	0 to 6	25	89		
BTJ24-12S250D		12	0 to 2.5	15			
BTJ24-15S200D		15	0 to 2	10		91	
BTJ24-12W125D		±12	0 to 1.25	30	0.5		1.0
BTJ24-15W100D		±15	0 to 1	20			
BTJ48-03S700D	48 (18 to 76)	3.3	0 to 7	10	87	0.4	0.4
BTJ48-05S600D		5	0 to 6	25	90		
BTJ48-12S250D		12	0 to 2.5	20			
BTJ48-15S200D		15	0 to 2	15		91	
BTJ48-12W125D		±12	0 to 1.25	30	87		0.5
BTJ48-15W100D		±15	0 to 1	20		90	

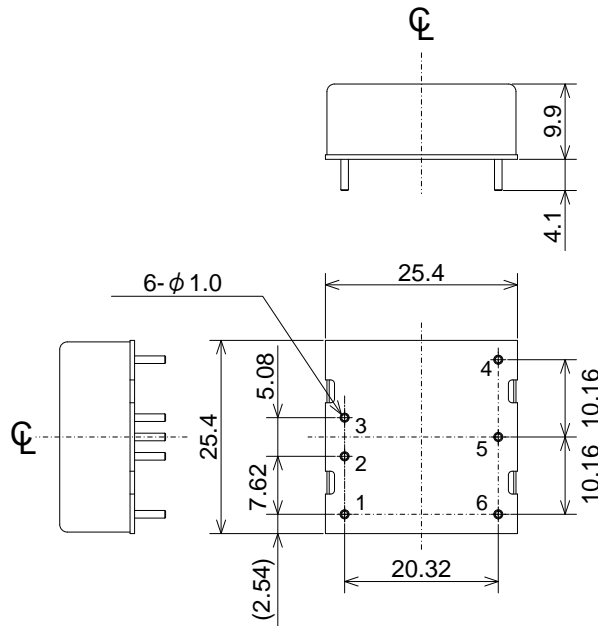
Bellnix Co., Ltd.

5-7-8 Negishi Minami-ku Saitama-shi
Saiama JAPAN Postcode: 336-0024
TEL: +81-48-864-7733 FAX: +81-48-861-6402
E-mail: info@bellnix.com
URL : http://www.bellnix.com

No.C012-0.1EN

Bellnix[®]

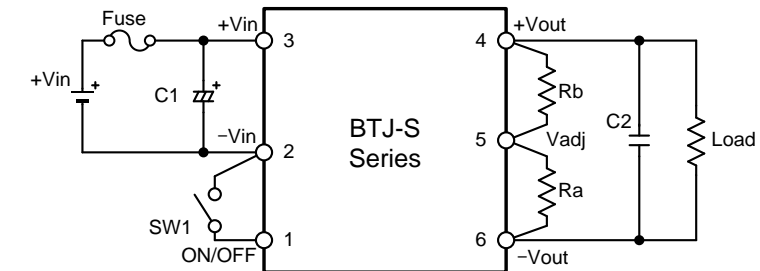
Dimensions



Unit:mm

Standard connection diagram

Single type (S)



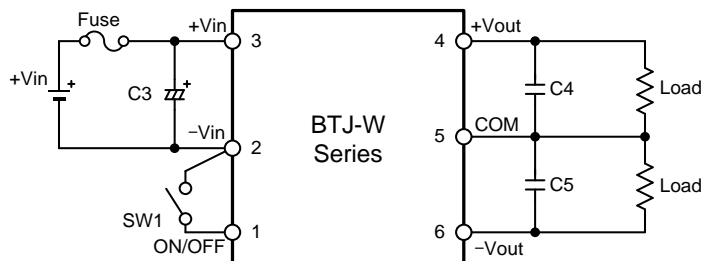
When changing the output voltage, connect Ra or Rb.

[BTJ24-xxSxxxD]
C1: more than 120 μ F
[BTJ48-xxSxxxD]
C1: more than 47 μ F

SW1
Open = Output OFF
Short = Output ON

* When used at less than -20°C
[BTJxx-03S700D / BTJxx-05S600D]
C2: 22 μ Fx2 (multilayer ceramic capacitors)

Dual type (W)



[BTJ24-xxSxxxD]
C1: more than 120 μ F
[BTJ48-xxSxxxD]
C1: more than 47 μ F

SW1
Open = Output OFF
Short = Output ON